

# BLACK HILLS & BADLANDS SD

TOURISM ASSOCIATION

BlackHillsBadlands.com

Copyright 2024 Black Hills & Badlands Tourism Association

- 112 Interchange Exit Number
- 14 U.S. Hwy. Marker
- 44 State Hwy. Marker
- 21 Forest Service Road
- 18 County Road
- Gravel Road (Construction)
- Paved Highway
- Multi-Lane Divided Hwy.
- Tunnels

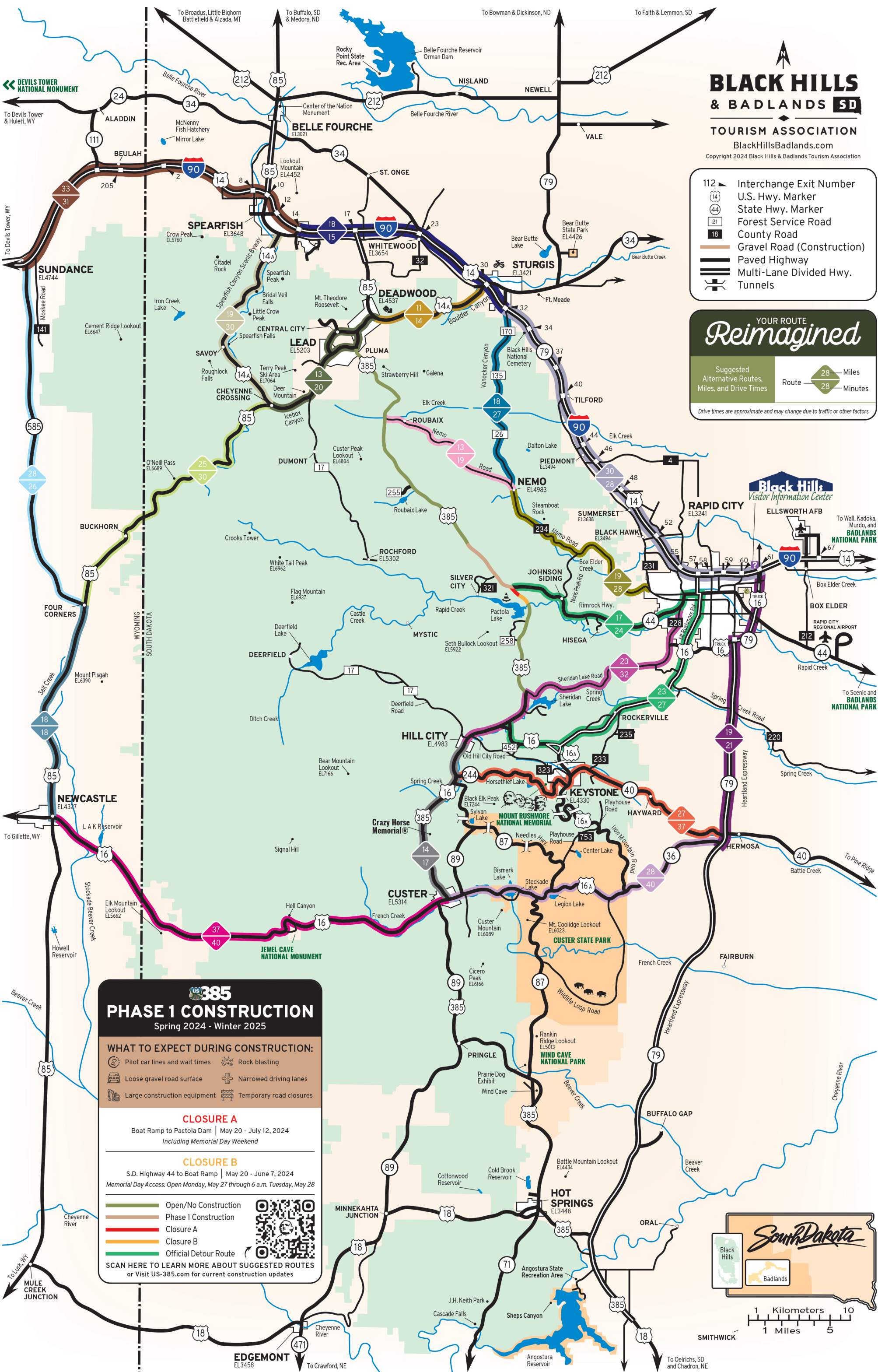
YOUR ROUTE

## Reimagined

Suggested Alternative Routes, Miles, and Drive Times

Route 28 Miles / 28 Minutes

Drive times are approximate and may change due to traffic or other factors



### US 385 PHASE 1 CONSTRUCTION

Spring 2024 - Winter 2025

**WHAT TO EXPECT DURING CONSTRUCTION:**

- Pilot car lines and wait times
- Rock blasting
- Loose gravel road surface
- Narrowed driving lanes
- Large construction equipment
- Temporary road closures

**CLOSURE A**  
Boat Ramp to Pactola Dam | May 20 - July 12, 2024  
Including Memorial Day Weekend

**CLOSURE B**  
S.D. Highway 44 to Boat Ramp | May 20 - June 7, 2024  
Memorial Day Access: Open Monday, May 27 through 6 a.m. Tuesday, May 28

- Open/No Construction
- Phase 1 Construction
- Closure A
- Closure B
- Official Detour Route

SCAN HERE TO LEARN MORE ABOUT SUGGESTED ROUTES or Visit US-385.com for current construction updates

